

**Plastic fittings**  
for SFP polyamide flexible conduits



6660 45

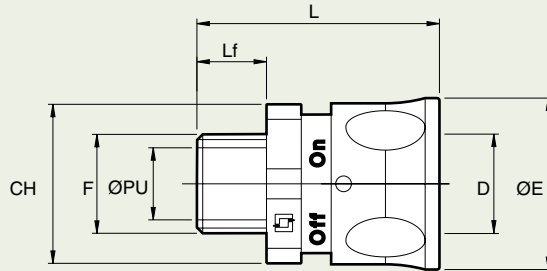
**Plastic fittings**  
for SFP polyamide flexible conduits

■ **Characteristics:**

material: PA6.6 self extinguishing halogen free  
 temperature rating: -45°C +105°C  
 index of protection: IP66 with SFP connectors  
 IP68 with SFP connectors and gasket  
 heat resistance : glow wire test 850°C  
 conduits: SFP standard page 52  
 SFP heavy page 53  
 SFP robotic page 54  
 SFP overbraided page 55

UL 316: File n° 111325  
 (system with heavy SFP Cable Gland)

■ **Size**



Item	SIZE (mm)						
	D	F	CH	ØPU	L	L1	ØE
6660 25	10	PG7	22	7	41,5	10	24
6660 26	10	PG9	22	7	41,5	10	24
3814 30	10	PG13,5	24	7	41,5	10	24
6660 27	12	PG7	24	8	41,5	10	26
6660 28	12	PG9	24	9	41,5	10	26
6660 29	12	PG11	24	9	41,5	10	26
3814 40	12	PG13,5	24	9	41,5	10	24
6660 30	16	PG11	28	12,5	46	12	30,5
6660 31	16	PG13,5	28	12,5	46	12	30,5
3814 50	16	PG16	28	12,5	46	12	30,5
6660 32	20	PG13,5	32	15,5	49	14	34,5
6660 33	20	PG16	32	15,5	49	14	34,5
6660 34	25	PG16	38	17,5	52	14	39,5
6660 35	25	PG21	38	19	52	14	39,5
6660 36	32	PG29	45	26	56	14	47
6660 37	40	PG36	54	33,4	59	14	55
6660 38	50	PG42	64	42,8	66	16	65
6660 39	50	PG48	64	42,8	66	16	65
6660 40	10	M12X1,5	22	7	41,5	10	24
6660 41	12	M16X1,5	24	9	41,5	10	26
6660 42	16	M16X1,5	28	11	46	12	30,5
6660 43	16	M20X1,5	28	12,5	46	12	30,5
6660 44	20	M20X1,5	32	14,5	49	14	34,5
6660 45	20	M25X1,5	32	15,5	49	14	34,5
6660 46	25	M25X1,5	38	19	52	14	39,5
6660 47	32	M32X1,5	45	26	56	14	47
6660 48	40	M40X1,5	54	33,4	59	14	55
6660 49	50	M50X1,5	64	42,8	66	16	65

Pack	Item	Straight SFP connectors	
		One-piece fixed male fitting, self extinguishing, halogen free polyamide material. Guarantees high resistance to pulling, provides IP 66 protection (and IP 68 with use of gasket) to the SFP system in both static and dynamic conditions.	
		<b>ISO thread</b>	
(pcs)		Thread size	Outside conduit diameter
100	6660 40	M12	10
100	6660 41	M16	12
75	6660 42	*M16	16
75	6660 43	M20	16
50	6660 44	M20	20
50	6660 45	M25	20
40	6660 46	M25	25
20	6660 47	M32	32
15	6660 48	M40	40
10	6660 49	M50	50
		<b>PG thread</b>	
(pcs)		Thread size	Outside conduit diameter
100	6660 25	PG7	10
100	6660 26	PG9	10
100	3814 30	PG13,5	10
25	6660 27	PG7	12
25	6660 28	PG9	12
25	6660 29	PG11	12
25	3814 40	PG13,5	12
15	6660 30	PG11	16
15	6660 31	PG13,5	16
15	3814 50	PG16	16
50	6660 32	*PG13,5	20
50	6660 33	PG16	20
40	6660 34	PG16	25
40	6660 35	PG21	25
20	6660 36	PG29	32
15	6660 37	PG36	40
10	6660 38	PG42	50
10	6660 39	PG48	50